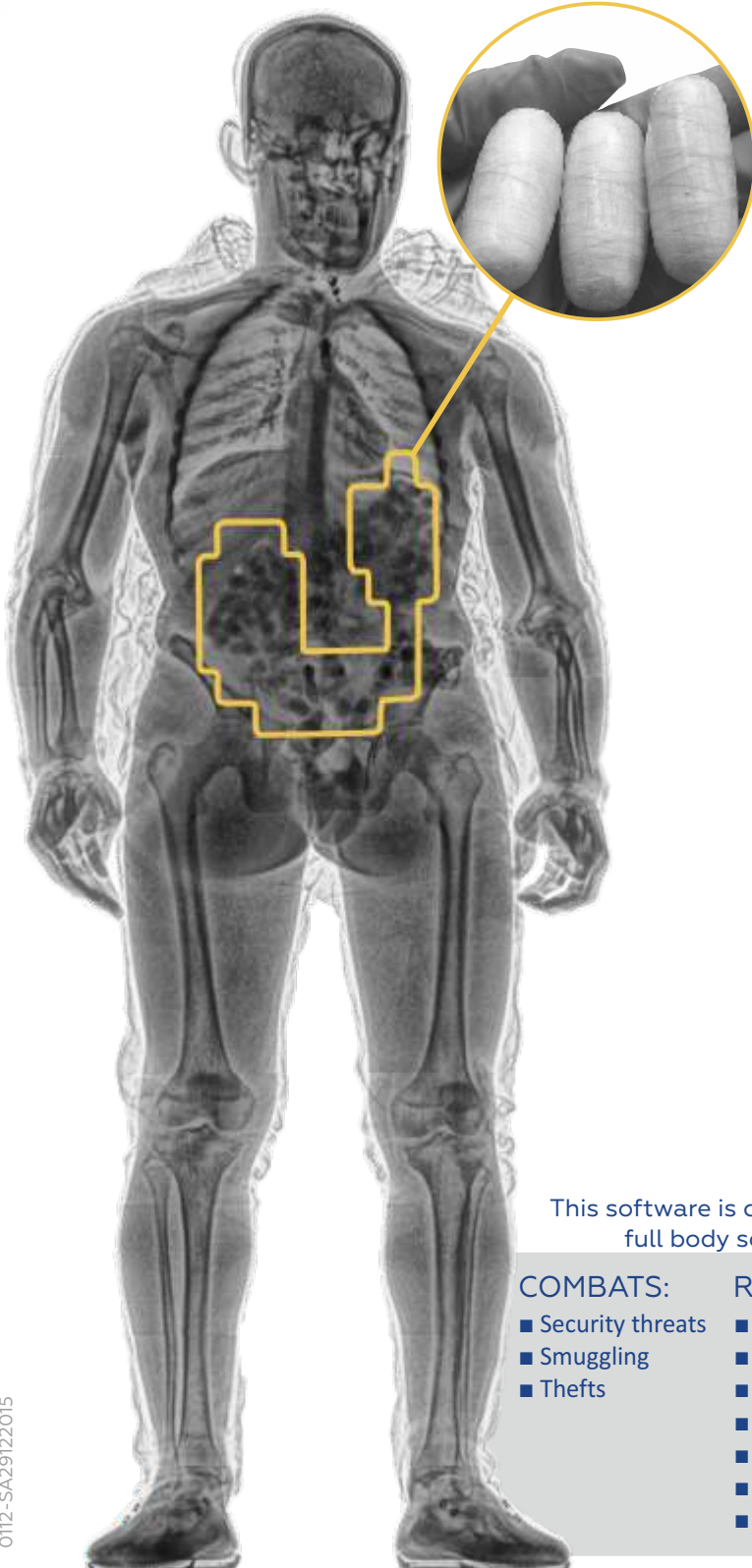


DRUG DETECTION SOFTWARE

YOUR GUARD PREVENTING DRUG SMUGGLING



DRUGGUARD

The necessity of quick and effective detection of drug containers hidden inside the human body pushed ADANI to the new technology that could response to increasing drug smuggling threats.

In the matter of seconds ADANI's intelligent software analyzes the images and outlines the suspicious areas where the drugs might be concealed.

KEY FEATURES:

- Optimization of drug searching process
- Elimination of the human factor
- Low false alarm rate
- Color outlining

SOFTWARE CAPABILITES:

- Concealed narcotics localization
- Less image analysis time
- Remote upgrade capability
- Storage of all images with outlined zones

This software is created for ADANI full body screening systems:

COMPASS

COMBATS:

- Security threats
- Smuggling
- Thefts

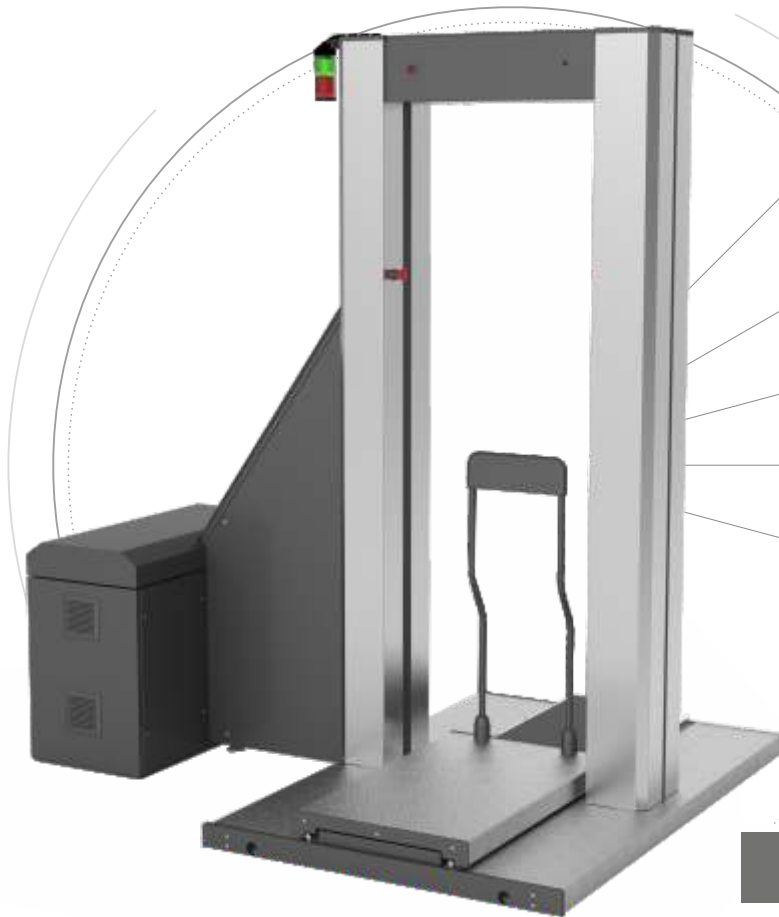
REVEALS:

- Narcotics concealed in body cavities
- Precious stones and rare metals
- Electronic devices
- Explosives (including liquid)
- Detonators
- Knives and blades (even ceramic)
- Weapons



THE MOST EFFECTIVE THREAT AND
CONTRABAND IMAGING SOLUTION
FOR OBJECTS LOCATED ON
OR IN THE HUMAN BODY

COMPASS



-  NARCOTICS IN BODY CAVITIES
-  ELECTRONICS AND DETONATORS
-  EXPLOSIVES AND LIQUIDS
-  CERAMIC AND PLASTIC KNIVES AND BLADES
-  WEAPONS

FULL BODY SECURITY SCREENING SYSTEM



FAST

7 second scan



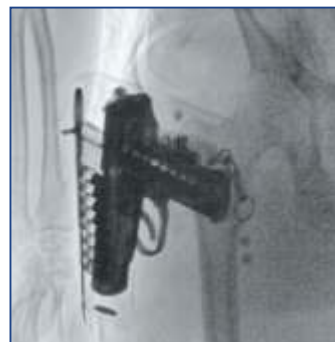
SAFE

Meets ANSI 43.17.2009 standard



FLEXIBLE

- 3 different scan settings
- Software fully compatible with most Access Control Systems
- Capacity to be upgraded to Dual View after installation
- Built in Privacy Software
- Multi screen and remote viewing compatible
- Drug Detection Software



The single view system is a fast and effective tool for accurate screening of visitors and people entering or leaving high value commodity locations

Physical characteristics

Dimensions, max	2,260 mm[L] x 2,000 mm[W] x 2,500 mm[H] [88.97" x 78.74" x 98.04"]
Weight	750 kg [1,653.47 LBS]
Scanning Speed	Fully adjustable 7-14 seconds
Platform Capacity	300 kg [660lbs]
Duty Cycle	100% - 24 hrs continuous operation
Operating temperature	0°-45°C [32°-113°F]
Humidity	10% - 90% [non condensing]
Power supply	110-230 VAC +10% - 15%, 50/60 Hz, 15 Amp dedicated circuit [0.9 kVA]
X-ray dose per inspection	0.25 µSv
Digital X-ray detector	832 pixel L-shaped array
Scanning modes	3 independently configurable modes (LOW, MED, HI)
Wire detectability	32 AWG [0.01mm/0.004"]
Image manipulation features	Zoom (200x), b/w reverse, edge enhance, color overlay, auto filters, brightness/contrast
Monitor	24" 1080P LED [Full Body] (*optional touch screen)
Computer Hardware	CPU 3.4 GHz, 4 GB SDRAM, 500 GB hard drive, HD graphics accelerator, DVD±RW/CD-RW
Software	CONTEST diagnostic/ remote access software

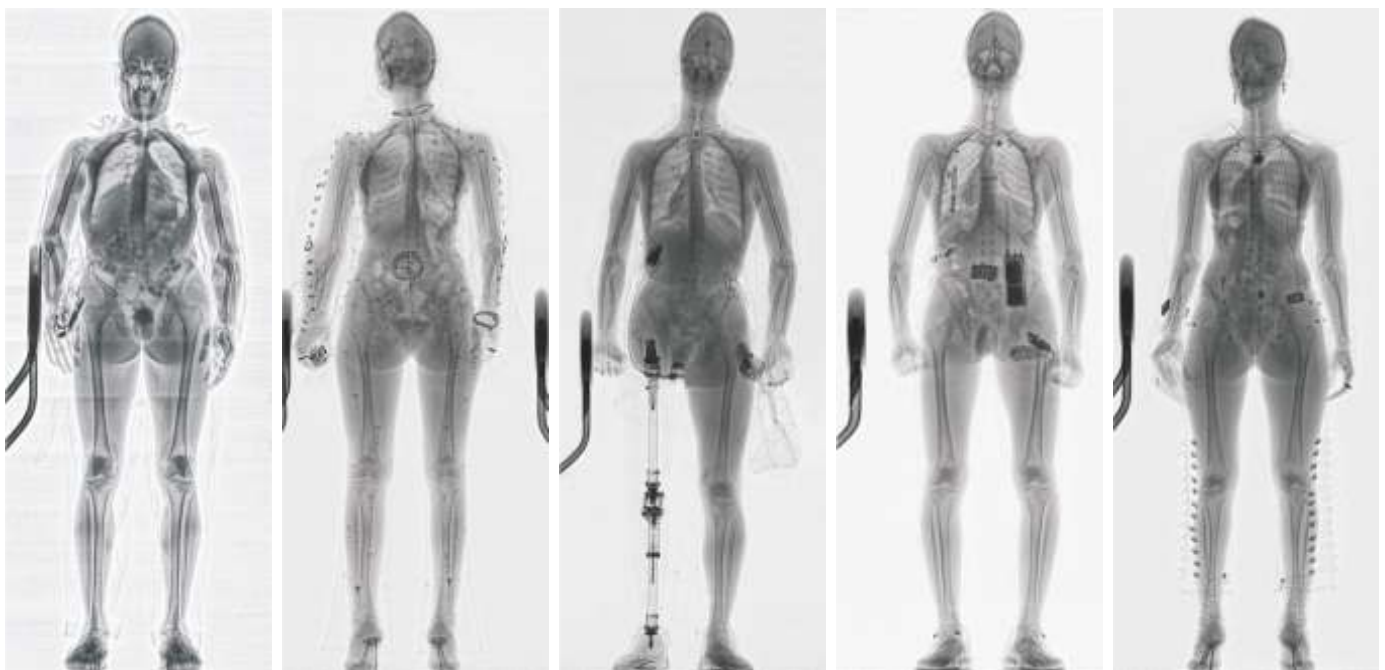


FULL BODY SECURITY SCREENING SYSTEM

...The most flexible body scanner available

CONPASS

Safely identifying threats, contraband and banned items hidden in and on the body



0138-SA19022016



With continual development of our products ADANI reserves the right to make changes to the design and specifications at any moment and without notice

www.adanisystems.com
info@adanisystems.com

ADVANCED SECURITY SOLUTION
WITH ENHANCED DETECTION
CAPABILITIES FOR FAST, SAFE AND
PRECISE SCREENING

COMPASS DV | DUAL VIEW

NARCOTICS IN BODY
CAVITIES

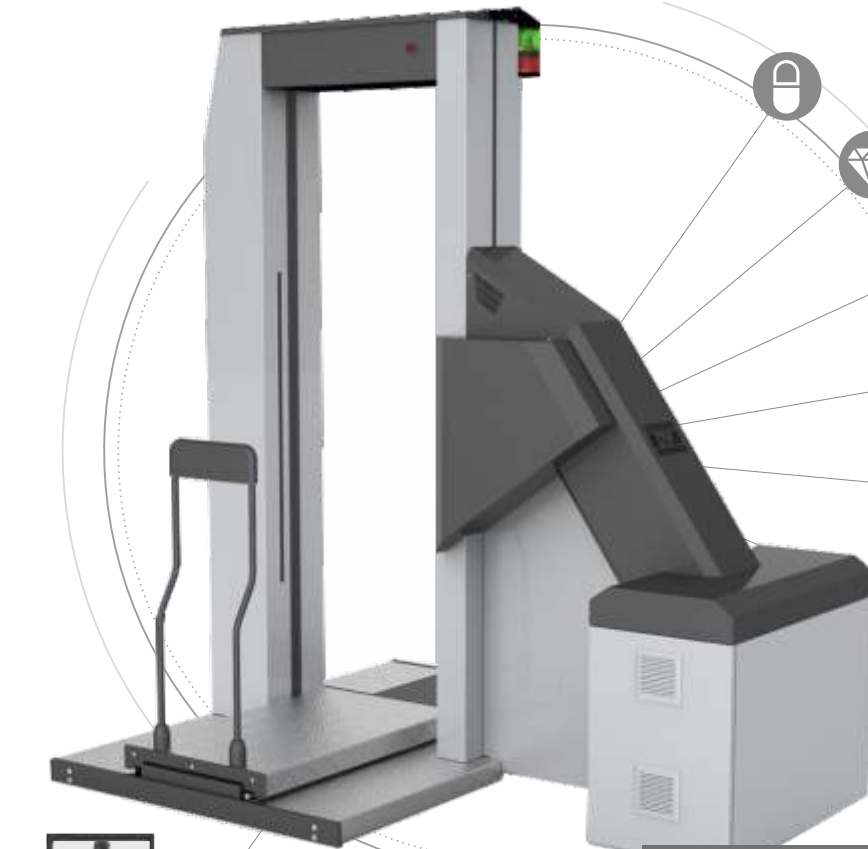
PRECIOUS STONES
AND RARE METALS

ELECTRONICS
AND DETONATORS

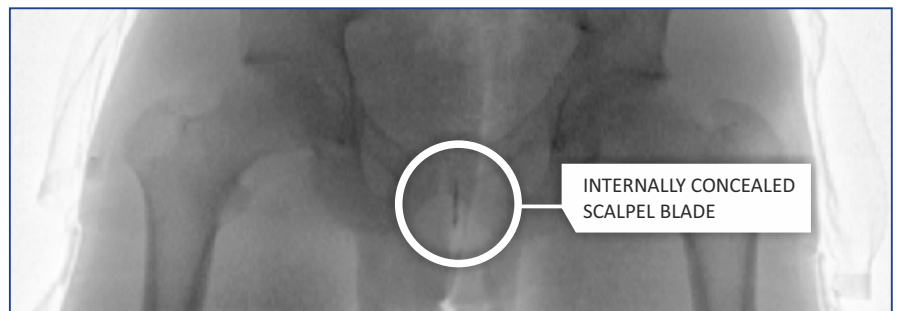
EXPLOSIVES
AND LIQUIDS

KNIVES
AND BLADES

WEAPONS



FULL BODY SECURITY SCREENING SYSTEM



PROVIDES TWO INDEPENDENT VIEWS IMPROVING OPERATOR'S DETECTION CAPABILITY



FAST

7 second scan



SAFE

Meets ANSI 43.17.2009
standard



FLEXIBLE

- 3 different scan settings for the Single and the Dual View modes
- Software fully compatible with most Access Control Systems
- Built in Privacy Software
- Multi screen and remote viewing compatible

General-use system Meets category 2, ANSI/HPS N43.17-2009 standard (SV)
 Limited-use system Meets Class A, ANSI/HPS N43.17-2009 standard

Physical characteristics

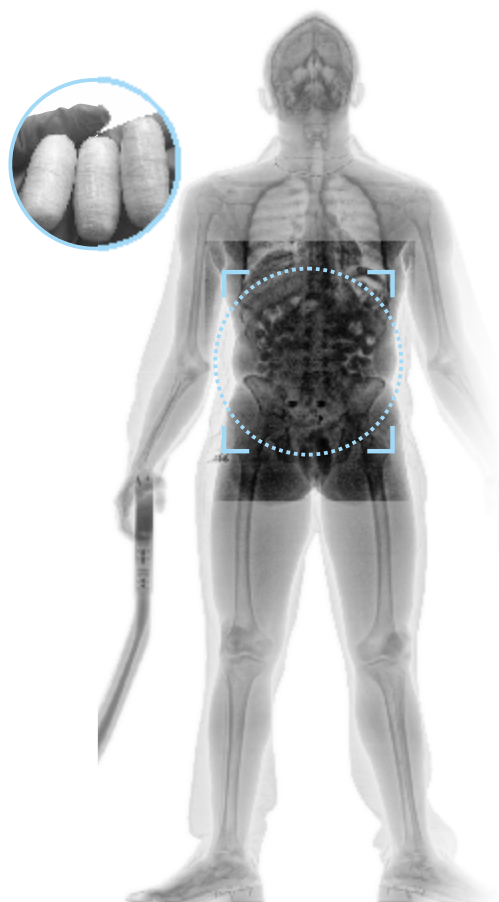
Dimensions, max	2,260 mm[L] x 2,000 mm[W] x 2,500 mm[H] [88.97" x 78.74" x 98.42"]
Weight	1050 [2314 LBS]
Scanning Speed	Fully adjustable 7-14 seconds
Platform Capacity	300kg [660lbs]
Duty Cycle	100% - 24hrs continuous operation

Installation data

Operating Temperature	0°-45°C [32°-113°F]
Humidity	10% - 90% [non condensing]
Power Supply	110-230 VAC +10% - 15%, 50/60 Hz, 20 Amp dedicated circuit [1.1 kVA]

Options

Network	Integration with Data Management System, server for additional data storage
Data input	Barcode, RFID, passport reader, other
Camera/CCTV	USB or IP camera – images stored in EasyData™
Radiation Protection	Lead shield w/ window [36" w x 72" H] and/or a fully enclosed cabin

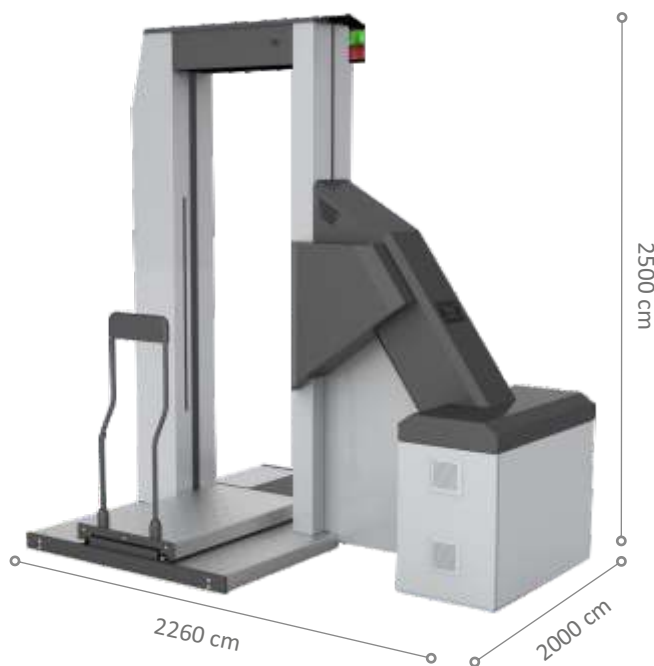


COMPASS DV | DUAL VIEW

The most flexible body scanner available

Real time imaging system

X-ray dose/inspection	Fully adjustable 0.10 µSv – 4.5 µSv 0.25 µSv typical for single view, 2.0 µSv typical for dual view EXTRA low dose dual view setting of 0.50 µSv [on request]
Digital X-ray Detector	832 pixel L-shaped array [Full Body], 384 pixel linear array [Torso] [1,216 total]
Preset Scanning Modes	3 independently configurable modes plus on/off toggle of dual view [6 total]
Wire detectability	32 AWG typical [Full Body View], 38 AWG typical [Torso View] [0.01mm/0.004"]
Image manipulation features	Zoom, b/w reverse, edge enhance, color overlay, auto filters, brightness/contrast
Monitor	24" 1080P LED [Full Body], 19" 1080P LCD [Torso] *27" LED 1080P touch screen monitor optional*



0139-SA19022016



With continual development of our products
 ADANI reserves the right to make changes to the design
 and specifications at any moment and without notice

www.adanisystems.com
info@adanisystems.com

THIS X-RAY SHIELDING CABIN IS DESIGNED TO BE USED WITH THE COMPASS FULL BODY X-RAY SCREENING SYSTEM IN ORDER TO MINIMIZE THE RADIATION SAFETY ZONE AROUND THE DEVICE



- ▶ COMPASS X-ray Shielding Cabin is designed for crowded locations where there is a need to minimize or eliminate the X-ray safety zone around the COMPASS
- ▶ Front and back sliding doors allow the cabin to be used in a variety of operational scenarios
- ▶ Optional X-ray protective glass windows allow operators to maintain light of sight of scanned individuals at all times
- ▶ Door interlocks insure radiation safety outside the cabin and provide protection should a door be opened during operation
- ▶ Equivalent lead penetration allows the operators and bystanders to be in close proximity to the X-ray scanning system without any harm

COMPASS X-RAY SHIELDING CABIN

The COMPASS X-ray Shielding Cabin is the best solution for crowded areas and locations where there is a need to minimize the radiation safety zone. The cabin can be integrated with various data gathering devices such as CCTV cameras, access control systems and others.



INDUSTRIAL SECURITY



CRITICAL INFRASTRUCTURE



ADMINISTRATIVE BUILDINGS



PRISONS



CUSTOMS

Overall dimensions	1 960 mm / 77.17" [L]
	1 100 mm / 43.81" [W]
	2 255 mm / 88.78" [H]

Weight	about 1 000 kg / 2 204 lbs
--------	----------------------------

Number of windows	Optional, up to 12
-------------------	--------------------

Sliding doors control	Manual
-----------------------	--------